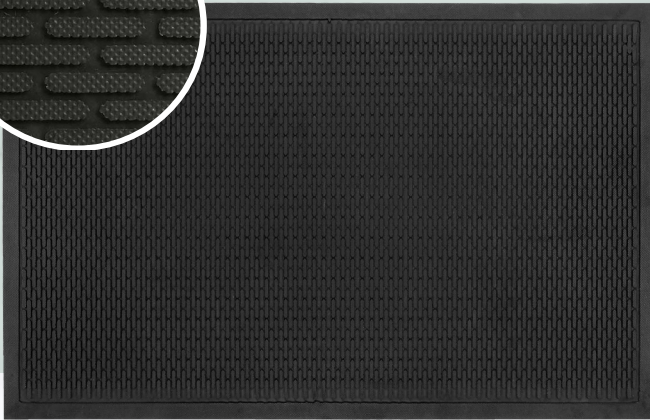


**Same Day or Next Day Fulfillment**

*Stocked items leave our facility  
within 24-48 hours*

*The following items are available to ship quickly, but please be aware that only specific sizes, colors, and configurations listed below are available. Other sizes, colors, and configurations may be available to order, but may not be stocked for same-day or next-day fulfillment.*



## SuperScape™ Mat

Molded tread surface cleats that effectively scrape tough dirt and grime from shoes. Ideal for use outside as a scraper mat or as a slip-resistant mat in wet areas.

### Stocked Sizes

2.5' x 3' 3' x 10'  
3' x 5' 4' x 6'

*Product No. 555*

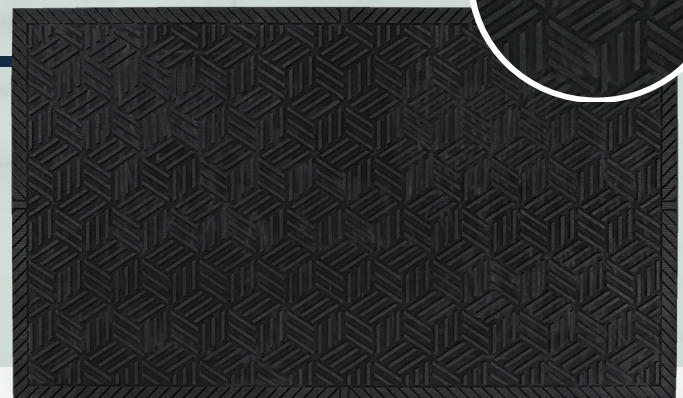
## SuperScape Plus® Mat

Multi-directional molded tread pattern that effectively scrapes tough dirt and grime from shoes. Unique drainable borders help filter water off the mat, making it ideal for use outside as a scraper mat or as a slip-resistant mat in wet areas.

*Product No. 5558*

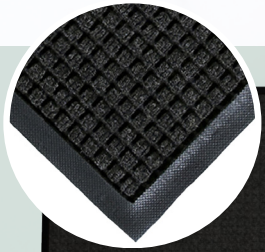
### Stocked Sizes

2.5' x 3' 3' x 10'  
3' x 5' 4' x 6'



**Same Day or Next Day Fulfillment**

*Stocked items leave our facility within 24-48 hours*



## WaterHog® Classic Mat (Charcoal)

Durable, stain-resistant and bi-level surface effectively traps dirt and moisture keeping your floors clean, dry, and safe.

### Stocked Sizes (Charcoal, Universal Backing)

2' x 3' 3' x 5' 4' x 6'  
3' x 4' 3' x 10'

### Stocked Sizes (Charcoal, Smooth Backing)

3' x 5'  
4' x 6'

Product No. 200

## WaterHog® Fashion Mat (Charcoal)

Durable, stain-resistant and bi-level surface effectively traps dirt and moisture keeping your floors clean, dry, and safe.



### Stocked Sizes (Charcoal, Universal Backing)

2' x 3' 3' x 5' 4' x 6'  
3' x 4' 3' x 10'

Product No. 280



## WaterHog® Max Diamond Mat (Black Smoke)

Durable, stain-resistant and bi-level surface effectively traps dirt and moisture keeping your floors clean, dry, and safe. Eco Premier features a diamond pattern woven at 30 ounces per yard versus the traditional 24 ounces.

### Stocked Sizes (Black Smoke, Universal Backing)

2' x 3' 3' x 5' 4' x 6'  
3' x 4' 3' x 10'

Product No. 2295

**Same Day or Next Day Fulfillment**  
*Stocked items leave our facility  
 within 24-48 hours*

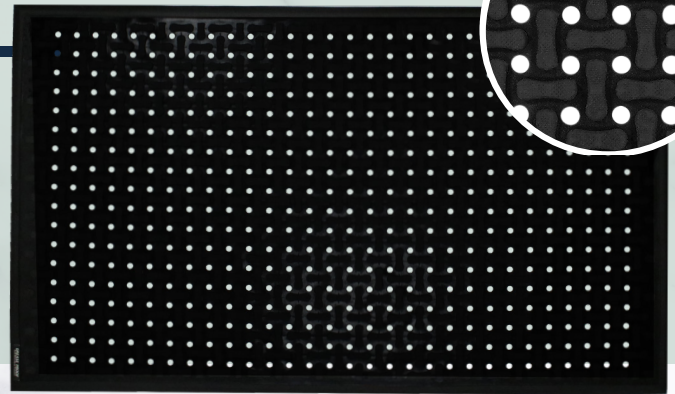
## Comfort Flow™ Mat

Flow through mat with anti-fatigue properties designed for wet areas where grease, oil, and chemicals may be present. Provides excellent slip-resistance and comfort at 3/8-inch thick.

Product No. 420

### Stocked Sizes

2' x 3' 3' x 9'  
 3' x 5' 4' x 6'



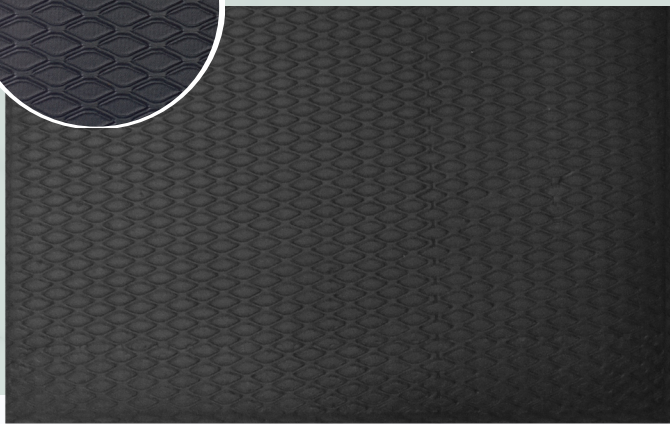
## Cushion Max™ Mat

Anti-fatigue mat that features 5/8-inch nitrile-blended foam designed to withstand grease, oil, and chemicals. Typically lasts twice as long as PVC foam mats.

### Stocked Sizes

2' x 3' 4' x 6'  
 3' x 5'

Product No. 414



## Hog Heaven® Mat (Solid Black Only)

The ultimate 3-in-1 anti-fatigue mats designed to provide comfort and durability in a variety of harsh conditions. Grease and oil proof, welding safe, and an ESD rating of electrically conductive.

Product No. 421, 422

### Stocked Sizes

5/8" 7/8"  
 2' x 3' 2' x 3'  
 3' x 5' 3' x 5'



**Same Day or Next Day Fulfillment**

*Stocked items leave our facility within 24-48 hours*



## CleanShield® Urinal Mat

Premium 30-day disposable restroom mats designed to help prevent odors and protect floors and grout from uric acid damage.

- Seep-Guard barrier protects floors
- Tacki-Back adhesive keeps mat flat and in place
- 30-day Timestrip®
- 6 mats per case

*Product No. 4065, 4465*

## Sure Stride® Matting

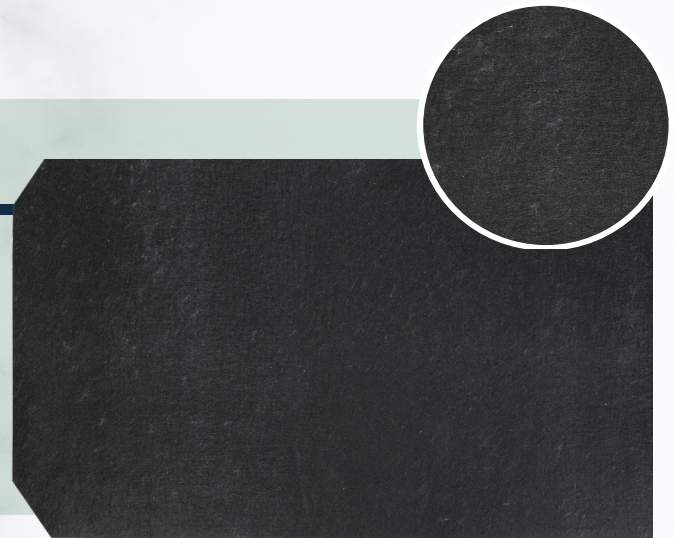
Low profile, anti-microbial matting with adhesive backing. Recommended for commercial use on hard floor surfaces to help prevent slips, trips, and falls caused by moisture.

- Cut to size from roll
- Performs up to 4 months

*Product No. 4450*

### Stocked Sizes

- 2' x 25' Roll
- 3' x 50' Roll
- 3' x 100' Roll



**Select additional items are stocked and available to ship quickly.**

Visit [www.mamattng.com/stock](http://www.mamattng.com/stock) for a complete list.

*Please note that for your order to ship same-day or next-day, it must contain only stocked items. Including non-stocked items in your order could delay shipping of your order until production of your non-stocked items is complete. If you need to order both stocked and non-stocked items, we recommend placing two separate orders if you need quick turnaround time on stocked items.*